

The aim of the **Outreach Service** is to improve outcomes for pupils with complex learning needs by building school capacity through facilitating training and resource development . A partnership between the Special Schools and mainstream schools will enable the exchange of skills and expertise.



School focussed work could be:

- Mentoring and coaching for TAs
- Working with pupils with ASD and SLD
- Multi-sensory teaching
- Developing independent living skills
- Social stories
- Using signs and symbols
- Person Centred learning
- Disability awareness
- Modifying behaviour
- Structuring the curriculum, routines, schedules
- Manual handling
- Extended Schools activities



Manager: Sue Barlow
 Priory School
 Bury St Edmunds
 Suffolk
 IP32 7BH

01284 761934
sue.barlow@priory.suffolk.sch.uk

Co-ordinator: Sue Weeks
sue.weeks@priory.suffolk.sch.uk

This menu will complement other sources of support within the LA. Monitoring and evaluation will be through Goal Attainment Scaling



Suffolk County Council

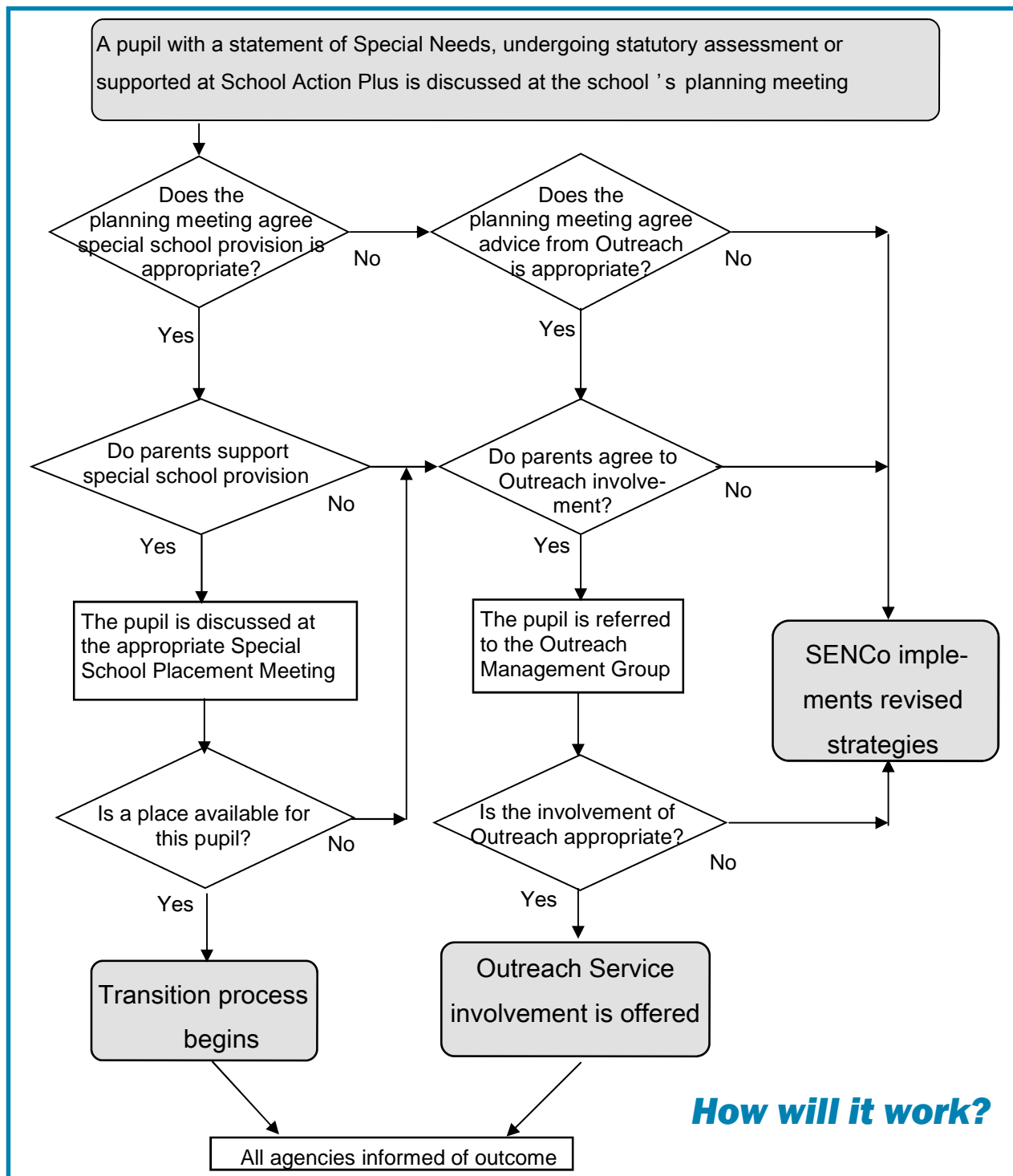
What is it?

It is to support schools in meeting the needs of pupils with complex educational needs.

Typically, pupils triggering the involvement of the Outreach Service will have complex learning needs and be supported at School Action Plus or above.

We will facilitate training and resource development to build a school's capacity to meet the needs of a wider range of pupils.

Managed by Sue Barlow, it will draw upon the expertise within Riverwalk, Hillside and Priory Special Schools.



How will it work?